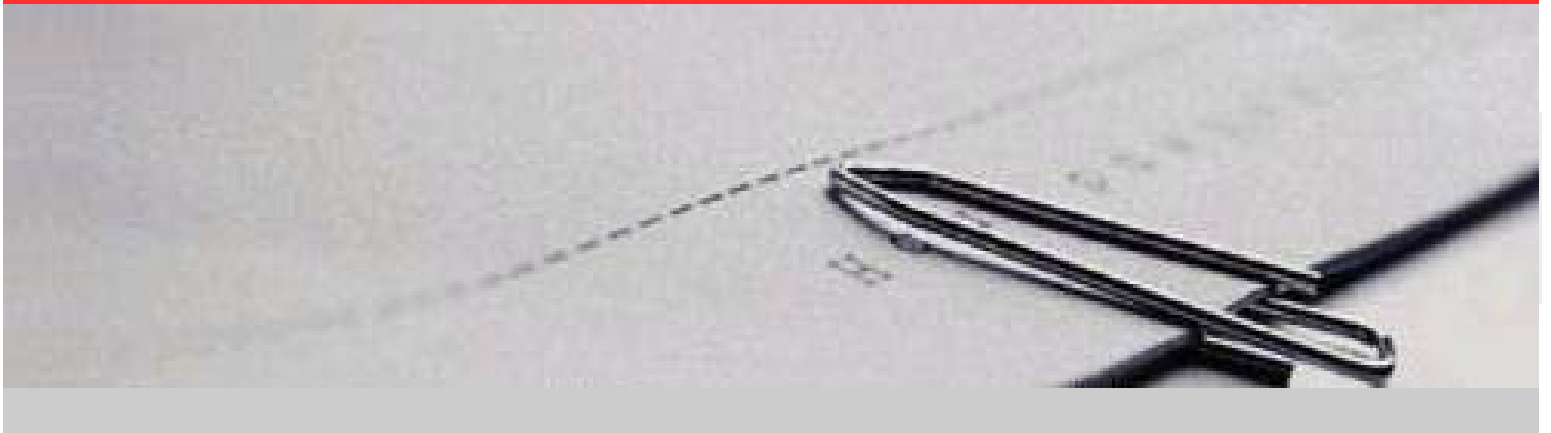


Ixio[®] Legal

Corporate Law Departments:

Take Control of Your Documents
with Ixio Legal's Solutions



QShift[®]

Smart Document Drafting Tool

Create Business Intelligence

- Dynamically add your comments to clauses
- Enforce best practice rules

Centralize Your Content

- Access your content anywhere anytime
- Standardize your document's formatting

Easily Learn to Use

- No need to hire a programmer or expert
- Simple but powerful

Eliminate Harmful Meta Data

- Create meta data free documents
- Keep old transaction data secure

Improve Efficiency

- Do more in less time
- Anyone can quickly and easily draft documents

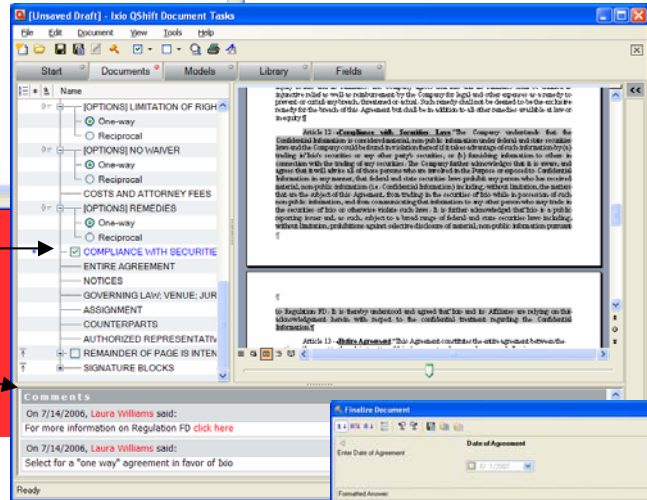
Retain Knowledge

- Share knowledge among your department
- Build and maintain knowledge management libraries

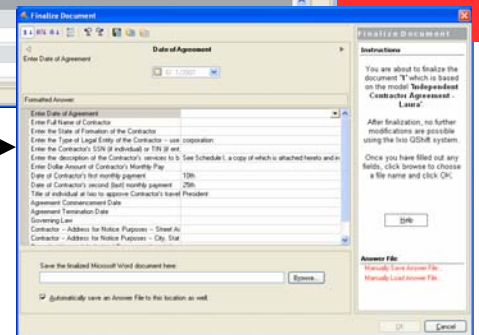
1. Choose a Model to Draft from



2. Select optional clause(s) Read comment(s)



3. Finalize document by answering question file



Key Features

- Add Comments to a Clause, Draft and or Model
- Assign rules at the clause level (Required, Optional, Default)
- Assign sub clause constraint rules (Choose only one, at least one or none, any)
- Share clauses and fields throughout multiple models
- Update a shared clauses in all models
- Create a clause library of independent clauses
- Reusable answer files for transactional information
- Save a final draft summary to show your intention
- Standardize the output of your document by applying MS Word templates for a consistent look and feel (Margins, Auto numbering, Styles, etc.)

Why QShift?

Much of what lawyers do is draft documents. It sounds straight forward, but it's not. Usually it means locating a good model to start with. It means hunting through other documents for the right language. It means exchanging emails with colleagues to determine the best approach or the latest applicable statute. QShift is a new way to harness all the knowledge floating around in old documents, emails, and your colleagues' heads to put it in a central location. QShift enables you to put all of this in a document model which you can use to automatically create a new document in minutes.

How does it work?

QShift works with your computer, an internet connection, and Microsoft Word. Instead of finding your last contract and doing a "File Save As," import it into QShift and create a model. Choose the sections and clauses you want to use, add any new clauses you need, fine-tune the language, and you've produced a new work product. Once your model has been built, you can make it better and better with each use. Add commentary, new clauses, links to on-line resources, all the knowledge you and your colleagues need to build smart documents. You are on your way to building a valuable library of reusable knowledge in the document model, where you need it, when you need it.

Complete documents in minutes.

Start fresh each time. Reuse your firm's preferred wording, style, and layout, but not content particular to your last client.

Store knowledge in the model.

Add your own expertise and QShift becomes even more useful. Specify which sections and clauses are required. Add commentary explaining when to use alternative text. Add links to resources in your firm or on the Internet.

Your system, only better.

QShift and Microsoft Word work together to create a document drafting powerhouse. No enterprise software, hardware, or consultants.

Smart Document Drafting —on Demand

Intelligent document assembly -
Innovative and affordable

On Demand, securely encrypted.

Your models and any documents in progress are available from wherever you are, on demand, via the Internet. But they're available only to you, and to those you designate. Ixio uses state of the art encryption and security technologies to ensure that your data, and access to it, is secure. A valuable library of reusable knowledge, where you need it, when you need it.

Find out more.

For more information and a Live Demonstration give us a call at 1-877.ASK.IXIO or email sales@ixio.com

The logo for Ixio Legal, featuring the word "Ixio" in a large, white, sans-serif font with a registered trademark symbol (®) to its upper right, followed by the word "Legal" in a slightly smaller, white, sans-serif font. The logo is centered on a dark gray rectangular background.

